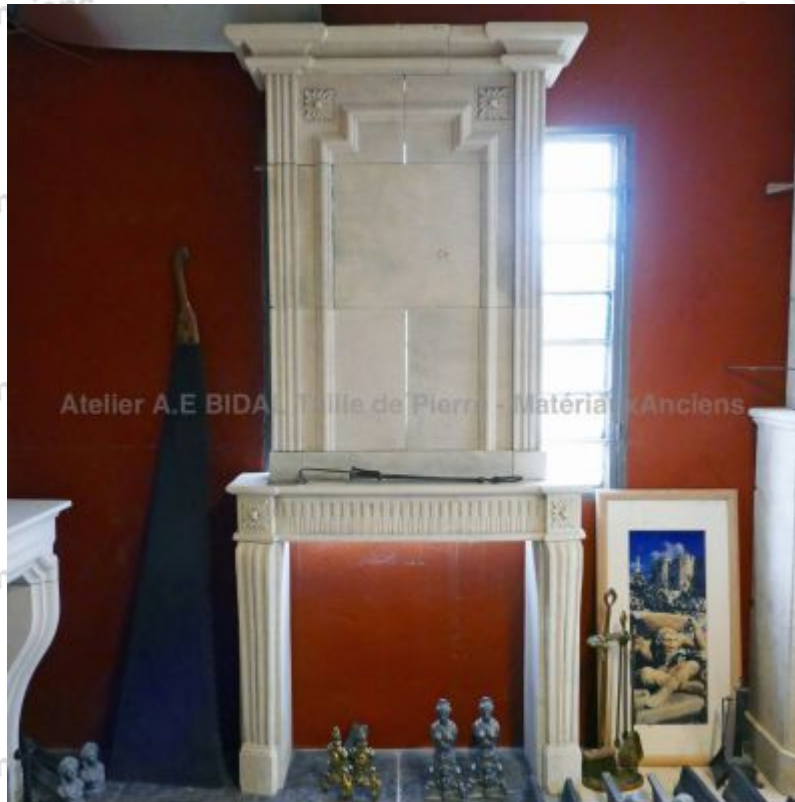


Mantelpiece with trumeau in stone inspired by the geometrical Louis XVI style



Hand-crafted in Provence, this fireplace with overmantel is carved in the natural stone of Estailades (a limestone from Provence) and is inspired by the classic Louis XVI mantels. It features a pair fluted straight jambs, a rectangular lintel decorated with carved grooves and rosettes, a molded tablet, a trumeau sculpted with geometrical patterns (fluted columns, flowers, molding in relief and beaded frame), and a molded stepped overhanging cornice.

Height 270 cm

Width 126 cm

Depth 40 cm

- Hearth opening : L 90 cm x H 90 cm - Base : L 145 cm
x D 48 cm x H 7 cm

Price

7250 €

Reference

CH31-Bis

SAS Alain Edouard Bidal

2420 Route du Thor - RN 100 - 84800 L'Isle sur la Sorgue (France)

Tél. : +33 (0)4 90 20 72 83 - infos@sculptures-bidal.com

www.materiaux-anciens-bidal.com - www.sculptures-bidal.com